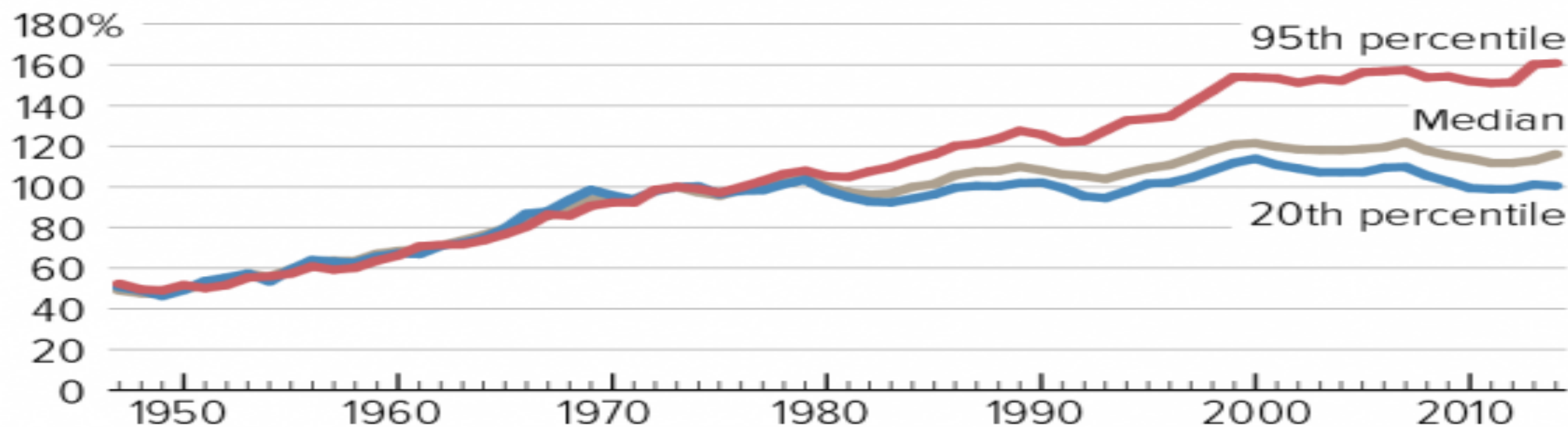


Income Gains Widely Shared in Early Postwar Decades — But Not Since Then

Real family income between 1947 and 2014, as a percentage of 1973 level



Note: In 2014 Census split its sample of survey respondents into two groups to test a set of redesigned income questions. In 2015 (reporting on 2014 income using the new questions), Census released two estimates of 2013 incomes, one based on the old questions and one on the new. The chart uses the estimate based on the old questions, based on CBPP's judgment that, due in part to sample size, it is likely more accurate for 2013.

Source: CBPP calculations based on U.S. Census Bureau Data