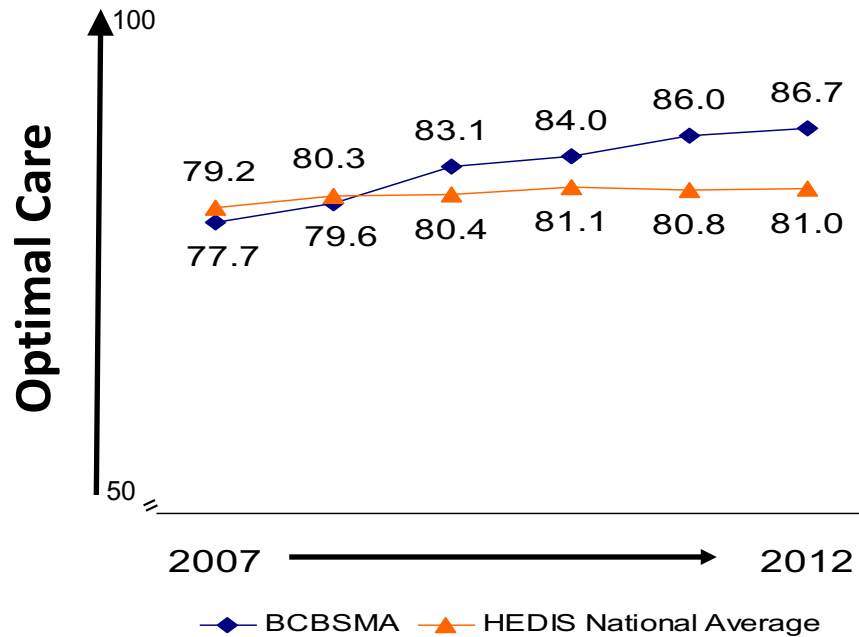


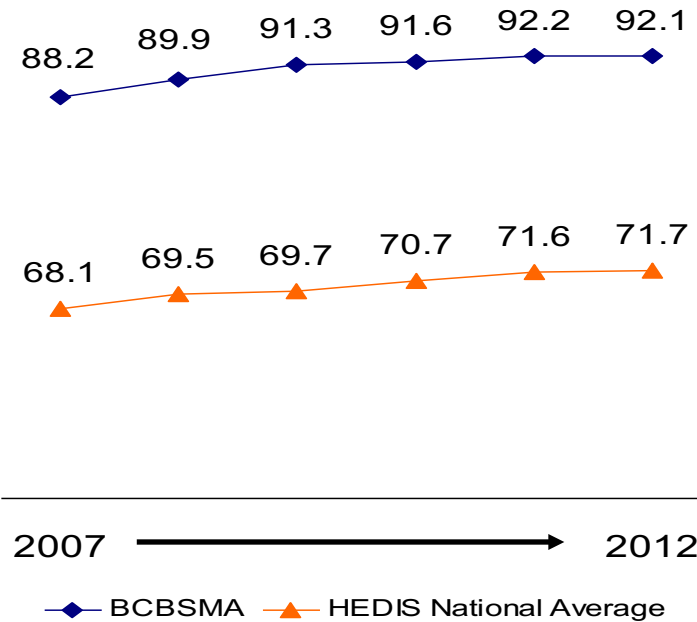
Results Under The AQC:

Improvement of the 2009 Cohort of AQC Groups from 2007-2012

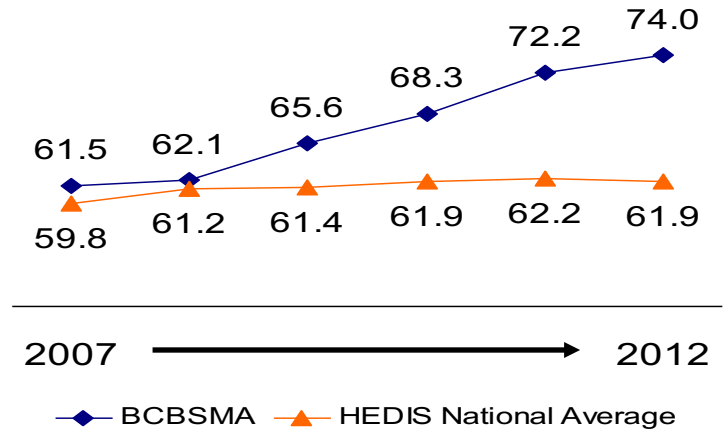
Adult Chronic Care



Pediatric Care



Adult Health Outcomes



These graphs show that the AQC has accelerated progress toward optimal care since it began in 2009. The first two scores are based on the delivery of evidence-based care to adults with chronic illness and to children, including appropriate tests, services, and preventive care. The third score reflects the extent to which providers helped adults with serious chronic illness achieve optimal clinical outcomes. Linking provider payment to outcome measures has been one of the AQC's pioneering achievements.